

Barnet Children's Partnership Board Report

Title: State of Barnet Voluntary Sector Report

Meeting Date: 13th July 2023

Author:

Service/ Dept.:

Report to be Presented By: Janet Matthewson

Introduction

We are delighted to present Young Barnet Foundation's (YBF) State of the children and young people's (CYP) Sector Report. YBF is the lead within the Barnet Together Alliance for groups working with children/young people and families (CYP/F).

Barnet Together is a partnership established in 2018 between YBF, Volunteering Barnet, and Inclusion Barnet. Barnet Together offers free capacity building-support service for the borough's Voluntary, Community, Faith, and Social Enterprise (VCFSE) sector. It supports local VCFSEs with funding, training, resources, and advice, and offers a platform for stronger sector representation, voice, and connection. Working together in this way is essential in being able to offer a wide range of support for the VCFSE across Barnet. Our wider partnership is the Barnet Together Alliance, recognising our partnership with the Local Authority.

Some Basic Barnet Facts

Barnet is an outer London Borough and has close regional relationships with neighboring boroughs through the **North Central Sub-Regional resilience forum** as well as being part of the **North Central London Integrated Care System**.

Barnet is the largest borough in London with a rising elderly population and an increasingly diverse population, with a higher-than-average life expectancy for both London and England.

Barnet, though a relatively affluent borough, has pockets of significant deprivation in Colindale, Burnt Oak, Child's Hill, and West Hendon.

The [Barnet Voluntary Sector Manifesto](#) (2020) suggests a thriving and impactful sector in terms of social capital, return on investment and contribution to the local economy.

From a YBF perspective, knowing and understanding our members/the sector not only allows us to meet its development needs but also allows us, as a partnership, to help support the sector to deliver for our CYP/F and the borough. Understanding the sector is also important as we are called upon to represent and advocate for the CYP sector strategically, which we can do fairly, giving valuable insight into the work of the sector.

Understanding the needs of the sector, against the backdrop of the needs of our CYP/F is crucial to achieving our overarching goal of creating a safer, fairer, stronger, more connected Borough.

1. Summary

As a membership organisation, YBF, takes the helicopter view of the borough, the needs of CYP/F and the development needs of the sector, allowing us, and the wider partnership, to fully understand the needs which helps to shape the support and funding that is needed to meet those needs. Collecting data on the CYP/F sector has been a journey for us but it was a crucial to help partners really understand the sector and its reach, there is always more to do. Home, School and Community all have important ingredients to help a child become tomorrow's successful adult.

The 2022, (collected January 2023) state of the CYP/F sector report draws on data from over 200 organisations in the VCFSE sector in Barnet working with CYP/F.

The CYP/F sector landscape changes year on year, impacted by external and internal factors, so we conduct a member renewal process every year. This process captures important information about individual members and gives us an overview of the CYP/F sector as a whole. The results can be standalone but also feed into the Barnet Together State of the Sector report, looking at organisations operating from cradle to grave.

YBF – Membership Renewal Data – (Membership Data) Collected in quarter one of 2023 – 2022 Memberships.

- As you will see from the report and accompanying presentation (Appendix A), it gives the partners a deeper snapshot into the sector, and highlights the contribution/reach of the sector, together with the challenges. Thus, we, as the Barnet Together Alliance, can be proactive with overarching/strategic support.
- The data we collect contributes to a better understanding of the sector, resulting in better cross-sector partnership working. Through strong partnerships, we can attract the funding needed to sustain delivery. Together we can BE the difference in the lives of our children and young people.
- As the largest borough in London, one would expect that there would be a thriving and diverse VCFSE in it, and this is very much borne out in the profile of the YBF members contributing to the renewal, with 67% of organisations reporting growth. However, it's not all good news as 32% say they are surviving with 1% declining.
- Funding remains a perennial concern for all VCFSE organisations, and it is no surprise that it features as a matter of great importance and where the need for support is most desired. However, we do see that staff well-being features almost as prominently. This demonstrates the very real need for VCFSE staff and volunteers to have the support they need to deliver crucial support service to the community.

- When it comes to funding, the data shows there to be a particular reliance on local funding including YBF's Space2Grow CYP Fund, closely followed by Local Authority and National Lottery funding, and then the Barnet Community Fund (operated by YBF on behalf of the BTA). Whilst all this funding is welcome there is perhaps room for a more diverse funding landscape to sustain the sector. There is also an opportunity to grow local giving to S2G and the BCF.
- The end of COVID-specific funding is still having an impact on organisations and the ongoing cost-of-living crisis is impacting the sector's ongoing sustainability.
- Funders are reporting rising applications, leading to increasingly difficult decisions. (We are a member of London Funders.)
- VCFSE members focusing on CYP/F consider mental health, the cost-of-living crisis, and the impact of COVID on CYP/F to be the most pressing concerns for their cohort. This demonstrates that the sector comes into close contact with the some of those most in need of support and this should be particularly recognised.
- Encouragingly, the survey and YBF delivery data shows that grassroots collaboration is alive and well and that partnership is key to VCFSE delivery.

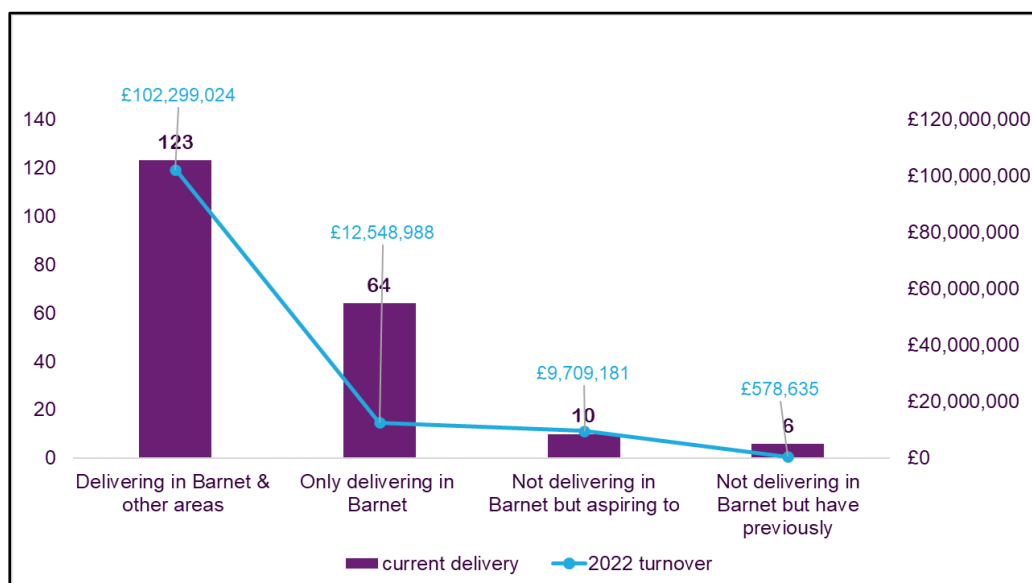
The accompanying presentation (Appendix A) contains all the recent data on our membership, (including those who were part of our member renewal process).

Some key points include:

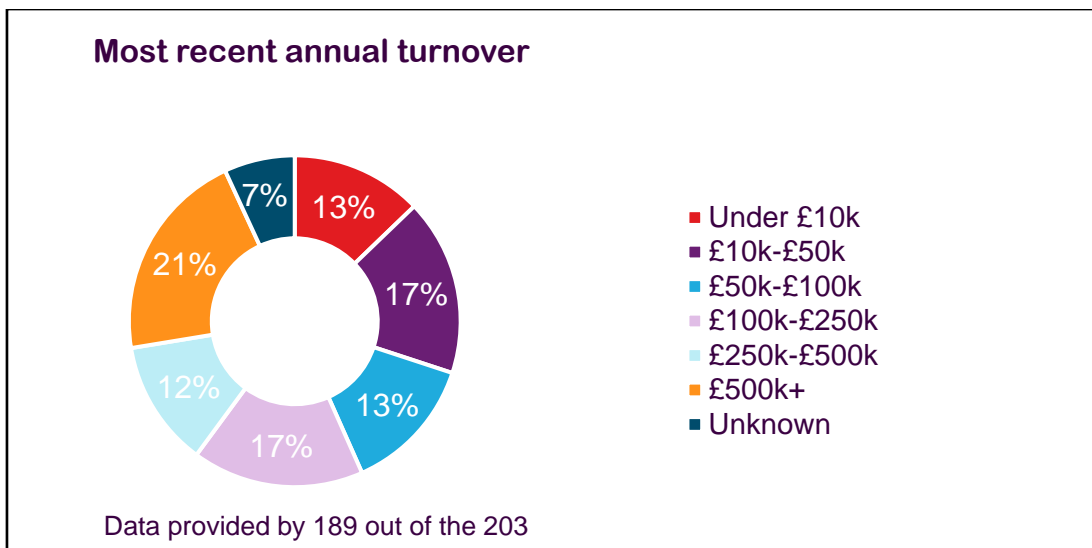
Organisational overview

The economic and social benefit of the CYP Sector to the London Borough of Barnet.

As of 27th June, YBF has 203 VCFSE members, 32% of which are only delivering services in Barnet (64). Using turnover data from these members, we can equate that in 2022 it brought £12,548,988 investment in the borough (2022-member turnover)



Taken from the 2023 YBF Member Renewal Survey



Taken from the 2023 YBF Member Renewal Survey

It is worth noting the income of the majority of members puts them into the small/micro charity category, indeed any charity with a turnover of under £1million is deemed a small charity.

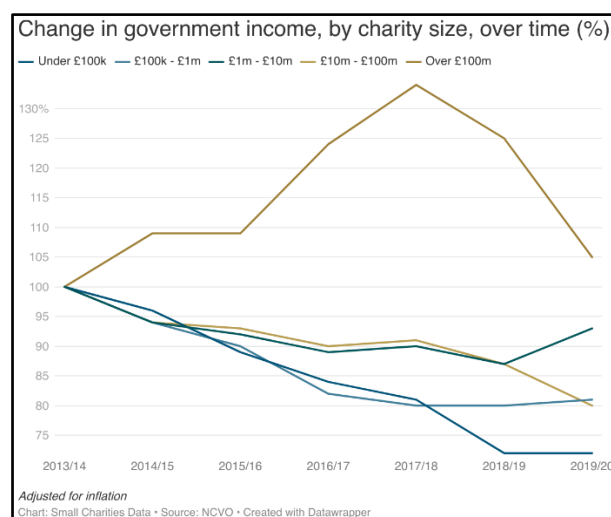
Growing – surviving - declining

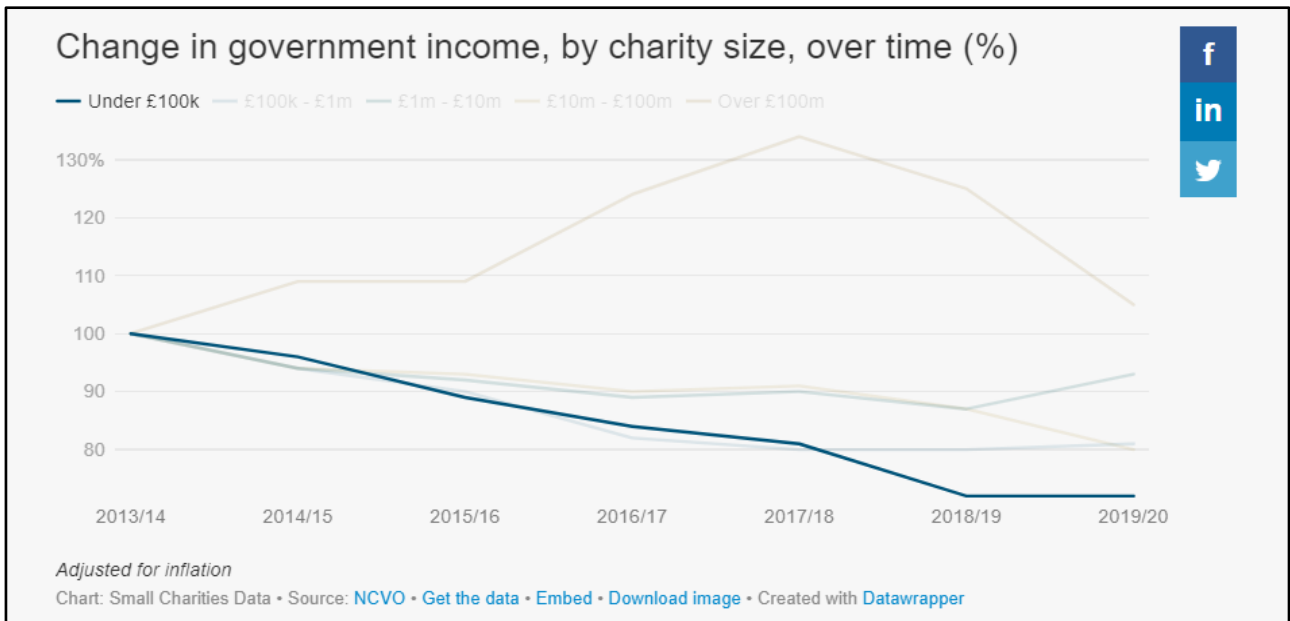
68% of members cite their organisational health as growing (137), 31% surviving (62) and 1% declining (2). Despite this, funding support, access to small grant pots and capacity building are currently the top 3 priorities. Which in turn stretches the services we provide even further.

Funding the sector – not just a Barnet issue.

How has government funding changed by the size of the charity over time?

- Over the past five years, income from the government has significantly declined for all charities, other than the very largest.
- The largest charities (over £100m) have seen a decrease in government income since 2017/2018.
- Overall, government income for all small charities has dropped by 20%.
- Charities with an income of under £100k have seen the greatest decline in their income from government, receiving nearly a third less than they did in 2013/14.





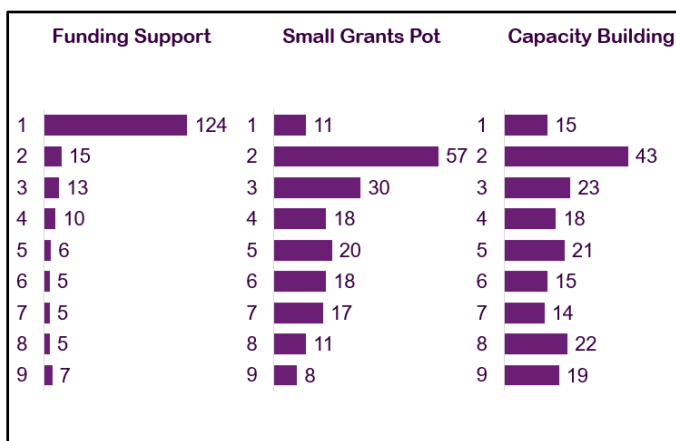
97% of charities are small, with an income of less than £1m. Yet this huge number of charities receive less than 20% of the total sector’s income.

[Government Funding to Small Charities](#)

[Championing Small Charities](#)

Sector Needs

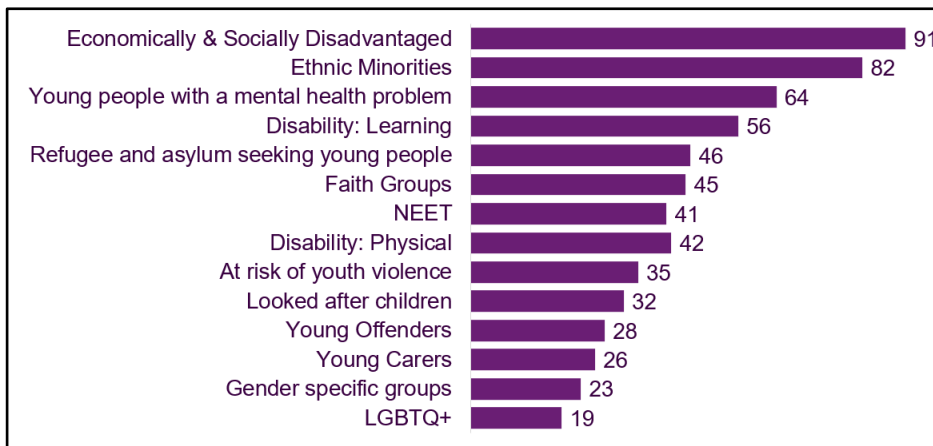
The following responses is no surprise, set against the backdrop of the Covid-19 pandemic, cost of living crisis, growing demand, lack of affordable community space, the sector is feeling quite bruised, (Top 3 reported below), with members also reporting back that the strain on their wellbeing and that of their staff is unsustainable – see Challenges below.



The [Value of Small](#) showed that small and local charities are distinctive in what they do, how they do it and where they do it. Importantly, this enables small charities to deliver high levels of value – to individuals, the economy and communities. Further reading [Expect yet undervalued and on the frontline](#)

Taken from the 2023 YBF Member Renewal Survey

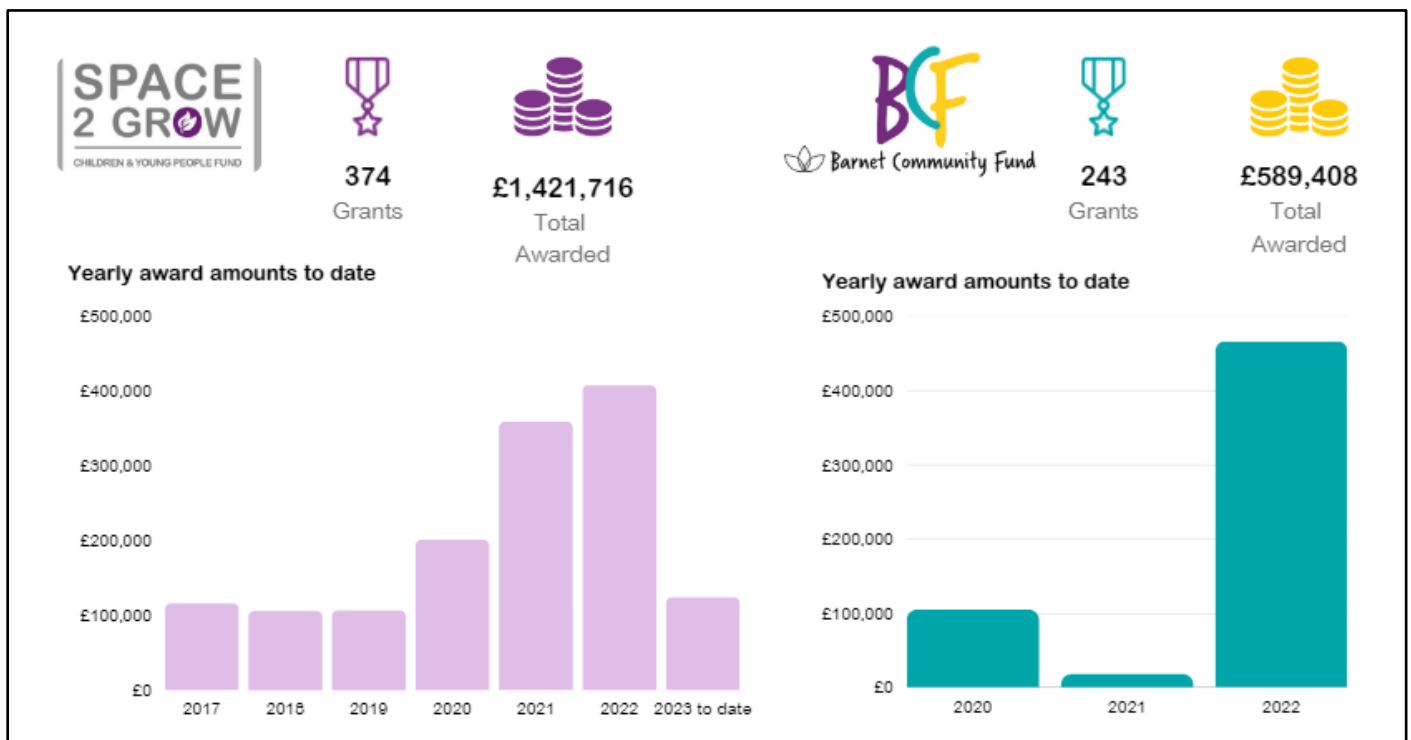
Members continue to support diverse communities (see below), with the top 2 groups being: economically and socially disadvantaged groups and ethnic minorities.



Taken from the 2023 YBF Member Renewal Survey

This reflects the need within the borough, as according to the Census 2021 50% of Barnet households are deprived in at least one dimension (education, employment, health, or housing). In addition to this 48% of the Barnet population (aged 24 years and under) are from an ethnic minority.

Our Space2Grow funding initiative and the Barnet Community Fund remain an important vehicle through which we can continue to reach grassroots organisations. To date, we have distributed over £2million in grants across both funds. We continue to see an increased interest in accessing these funding sources from our membership.



Taken from YBF grants reporting.

How many different young people have you worked with in the last 12 months? (Data from 191 members)

202,533 different young people worked with in the last 12 months

*we do not capture data on CYP/F attending more than 1 group. DATA - 0-25 years plus parents.

The Reach of the CYP/F VCFSE

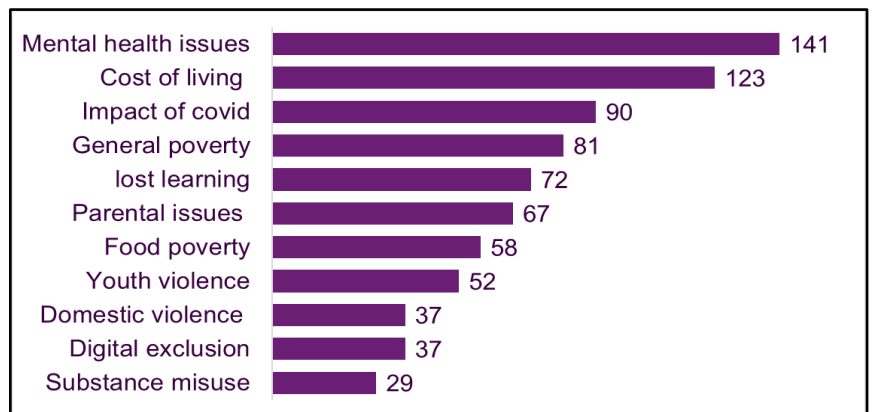
Evidence shows that small and local charities possess extensive expertise in repairing the damage caused by lack of trust or gaps in local systems. They intervene when other entities do not have the reach or trusted

relationships, assisting individuals in transforming their lives. This undertaking is of utmost importance. Moreover, our smaller charities gain valuable insights into areas where existing methods are ineffective, enabling them to pioneer novel approaches to support. They have a deep understanding of the issues and frequently possess viable solutions. Therefore, we firmly believe that small and local charities should be empowered to leverage this knowledge to bring about change, fostering innovation and fortifying their communities, thereby preventing these problems altogether. We will continue to nurture and help develop this work so that the borough can continue to benefit.

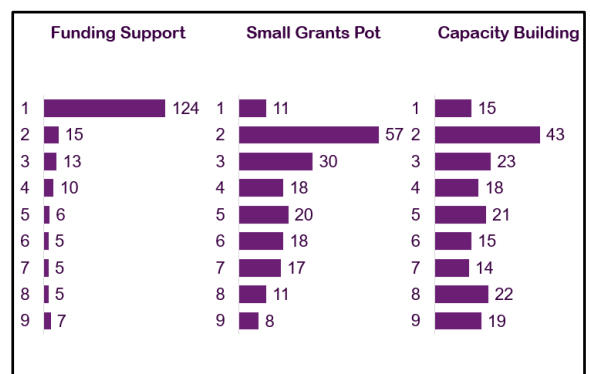
Challenges for the CYP Sector

Data from the ground.

Our renewal data shows that mental health issues is the top concern being experienced our members cohorts. This is the same as at our 2022-member renewal. We are now seeing the consequences of the pandemic further exacerbated by the cost-of-living crisis. The pandemic has exposed the additional capacity required for services particularly concerning the areas of mental health, poverty, and education.



There is no doubt that the challenges facing the sector are multi-faceted. **Top 3 priorities** for support are no surprise, set against the backdrop of the Covid-19 pandemic, cost of living crisis, growing demand, lack of affordable community space, the sector is feeling quite bruised, with members also reporting back that the strain on their wellbeing and that of their staff is unsustainable. We are now seeing the consequences of the pandemic further exacerbated by the cost-of-living crisis. Reduced funding and the capacity to offer services, Staff well-being and difficulty in recruiting new staff, are of top concern. Reduced funding and the capacity to offer services, Staff well-being and difficulty in recruiting new staff, are of top concern. Office and delivery space is also a key concern (other).



A concern is **that 6% (26)** of members report growing safeguarding concerns. We signpost members to the Barnet Safeguarding Childrens Partnership and disseminate training offered but do not have a dedicated safeguarding advisor for the sector. Given the number of groups, that operate in Barnet, we believe that more support is needed.

Data from February and March 2021 shows that [rates of probable mental disorder in children and young people have increased between 2017 and 2021](#) (rates identified in 2020 were similar to 2021). In 6- to 16-year-olds, rates had increased from 11.6% to 17.4%, among 17- to 19-year-olds, rates had increased from 10.1% to 17.4%. Additionally, [the proportion of children and young people with possible eating problems also increased](#). Among 11- to 16-year-olds, the proportion increased from 6.7% in 2017 to 13% in 2021, among 17- to 19-year-olds the proportion increased from 44.6% in 2017 to 58.2%.

Special educational needs (and disability) (SEND)

Some children with SEND appear to have suffered substantial impacts on their mental health and experienced greater anxiousness during the pandemic than children without SEND.

[COVID-19 mental health and wellbeing surveillance: report](#)

This is set against a background of decreased funding. The average success for a funding bid is 1 in 25, this represents a huge time investment in applications that are unsuccessful. This is in part echoed in a recent Pro Bono Economics report which cites that small charities and community groups are the most vulnerable to increasing demand and worsening finances.

[Breaching the Dam report](#)

Strategic Engagement

The lack of cross sector engagement has always been a challenge, but this is not for any other reason but lack of capacity. Expectation of engagement poses a huge pressure on the sector, their knowledge of their communities is sought regularly, with each engagement more pressing than the last, but with organisations stretched beyond their capacity delivering for their communities, regularly engagement is not an option for most of them. That is why it is important the Young Barnet is able to represent the sector and be trusted to do so.

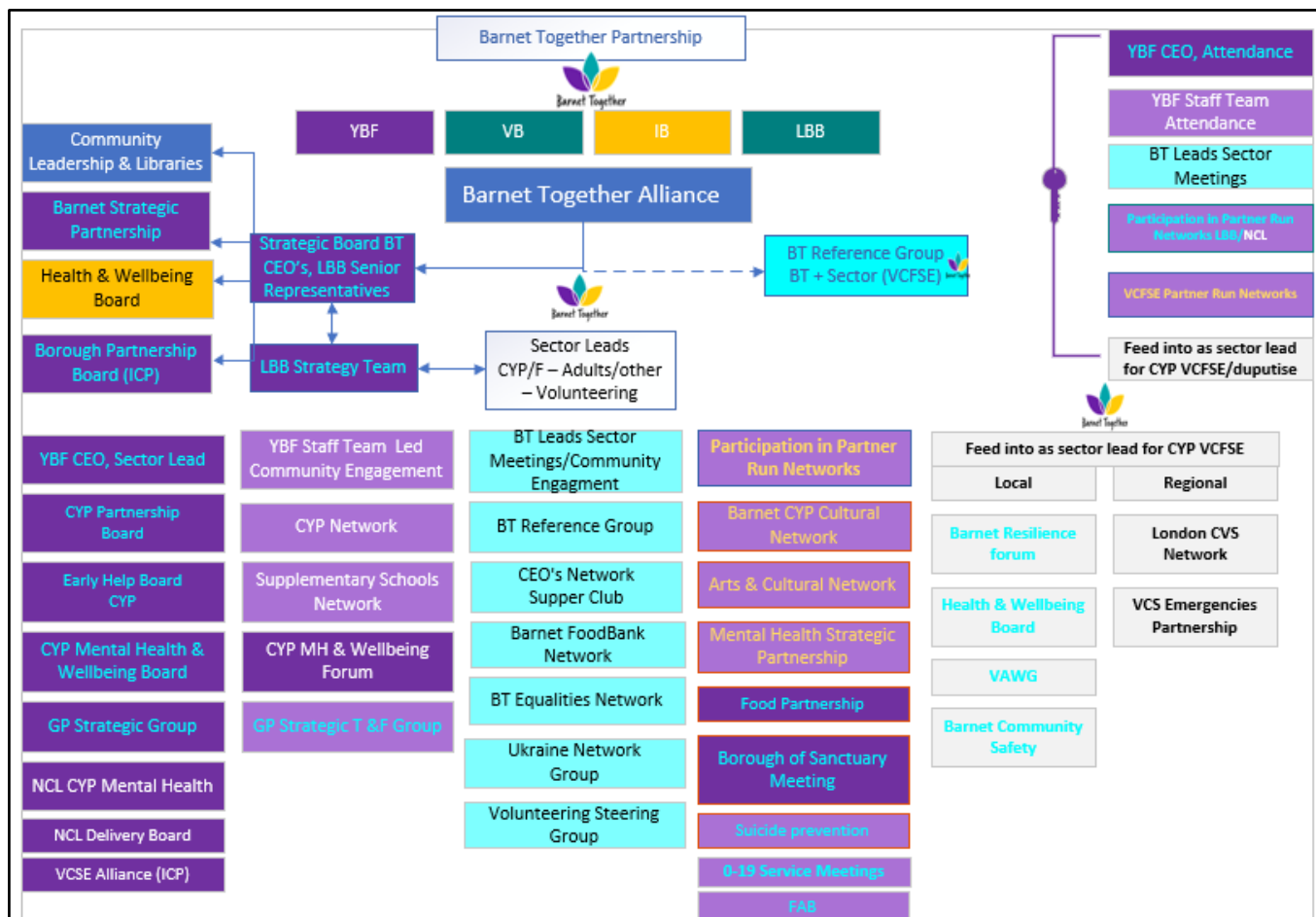


Taken from the 2023 Member Feedback survey

The emerging health strand with NCL, to include the 'neighbourhood model' is another example of mounting pressures on the sector. The need for health to reach into communities to better understand them and to address health inequalities is driving the need to engage with the YBF and the VCFSE. There is no doubt that the sector can support this strand of work, but the funding needs to follow the resident/patient. As stated above, most of the sector do not have the capacity to engage strategically, or to delivery additional services without the funding to do so. The sector, supported by YBF/BT and Public Health, successfully delivered on a funded vaccination campaign, which included training and support for organisations, allowing us, as a partnership to reach the demographic needed for this to be a success. Many of these groups are now supporting wider vaccine engagement within their community.

As leads for the sector, we are called upon to represent and advocate for the sector regularly but also many ad hoc meetings and projects. This represents YBF's strategic involvement – representing the sector and sharing learning with partners at LBB. We too, are being asked to represent the sector in the ever-growing health strand, this presents us with a capacity issue too.

YBF Strategic Engagement – Leadership and Advocacy



2. Consultation and Engagement

Included within the report

3. Conclusion and Recommendations

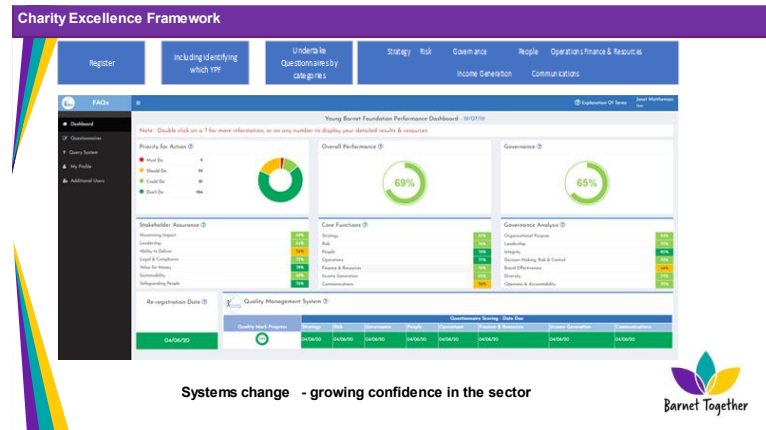
Continued Organisational Support

- Barnet has a high percentage of very small groups, as Young Barnet (Barnet Together) we need to ensure that support services are targeted to and accessed by these groups especially those run entirely by volunteers.

This is to include:

- o Access to information, advice, peer support and training

- Continue to roll our Charity Excellence Framework – a self assessment tool for groups



- Encourage participation in the wider VCFSE community through Barnet Together CEOs Network/supper club, plus other relevant networks
- Big changes are anticipated within Health as the Integrated Care Pathway is reinforced, the sector will need further support to adapt to these changes, and where possible to grow delivery within the Early Intervention and Prevention Strand to support this. However more capacity/funding is needed to delivery this.
- Continue the volunteering support offer to Volunteer leaders to help attract additional volunteers.
- A small percentage of organisations have identified their current organisational situation as declining (options were growing, surviving, or declining based on last year). A targeted approach will be offered to support their development needs.

Safeguarding

- Continue to signpost members to Barnet Safeguarding Childrens Partnership
 - Share training from the BSCP
 - Disseminate training and support available from BSCP – Tony Lewis

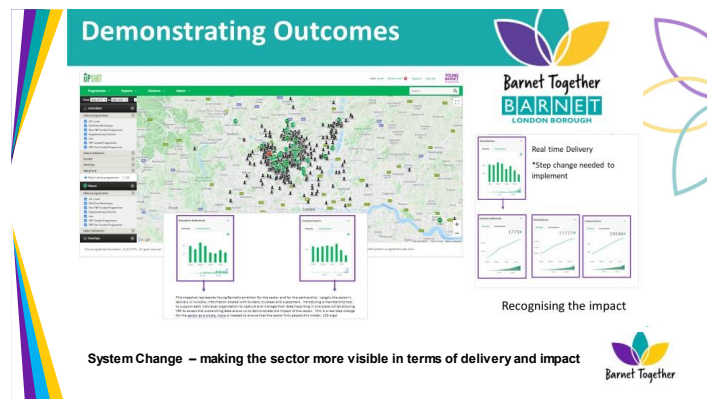
Funding Support

- Continue to provide funding support to all organisations to strengthen the sector:
 - Through 1-1's bid reviews – a learning journey.
 - Continue to provide group fundraising training *.
 - Partnership brokerage, ensuring that groups are working together to complement skills and delivery.
 - Provide support to the sector to develop and submit bids within the Borough and to external funders.
 - Support our partners to generate interest in the *ICP Innovation Fund, the Area Committee Funds and Crowdfund Barnet.
 - Sustain/Grow the small grants pots available through Space2Grow Children and Young People's Fund and the Barnet Community Fund and make sure this is widely publicised.

*See feedback on Fundraising sessions within PowerPoint

Measuring Impact

- Priorities for the sector will be the focused our delivery - YBF.
- Sector – we will continue the rollout of Upshot - upskilling the sector on the importance of monitoring and evaluation to support funding success.



Well-being of the Sector

- The sector has been at the front end of delivery throughout COVID, the ongoing challenges have done nothing to elevate this pressure on leaders and their workforce and they are reporting welfare challenges for the second year.
 - Explore with partners specific training and support around staff welfare given this is the biggest concern for many groups, we need to prevent sector burn-out. (As Barnet Together, we did deliver a partnership pilot – Well-being for Leaders to test the support that is needed for leaders within Barnet, this was well received. Unfortunately, to date, we have been unable to fund its expansion.)

Recruitment

- The sector has highlighted challenges with recruitment and retention.
 - Explore with partners how we put Barnet on the map in terms of recruitment, as challenges exist across all sectors. How do we share recruitment, insight, and best practice.

Volunteering

- The sector highlighted that volunteering has changed during COVID, and now the retention and recruitment of volunteers is a priority.
 - Our partners, Volunteering Barnet will provide support and training to look at the diversity and flexibility of volunteer roles to meet the needs and availability of volunteers in Barnet, including Trustee recruitment. This comes on the back of the Volunteering Strategy that was recently launched. [Volunteering Strategy](#)
 - Volunteering Barnet to explore/understand motivators and inhibitors for volunteering to support more engagement

Partnership Development

- Sustain and broaden work that supports partnership development to strengthen networks and delivery.
- Continue to work with groups/partners e.g., LBB/Schools to broker partnerships to attract additional funding into Barnet.
- Grow our schools offer as this has proved a great success for both schools and VCFSE with has resulted in...
 - 46 school partnerships
 - 147 constructive connections with at least 43 successful projects being delivered between schools and the VCFSE
 - Now establishing links with Elective Home Education

- Promoting School funding opportunities
- Supporting schools to apply to fund joint delivery through John Lyon's Charity
- Successful collaboration fund application – 1 school – 2+VCFSE working together to address challenges. In excess of £400K – plus one in the pipeline.
- Supporting a partnership school with a fundraising campaign for a new mini bus.

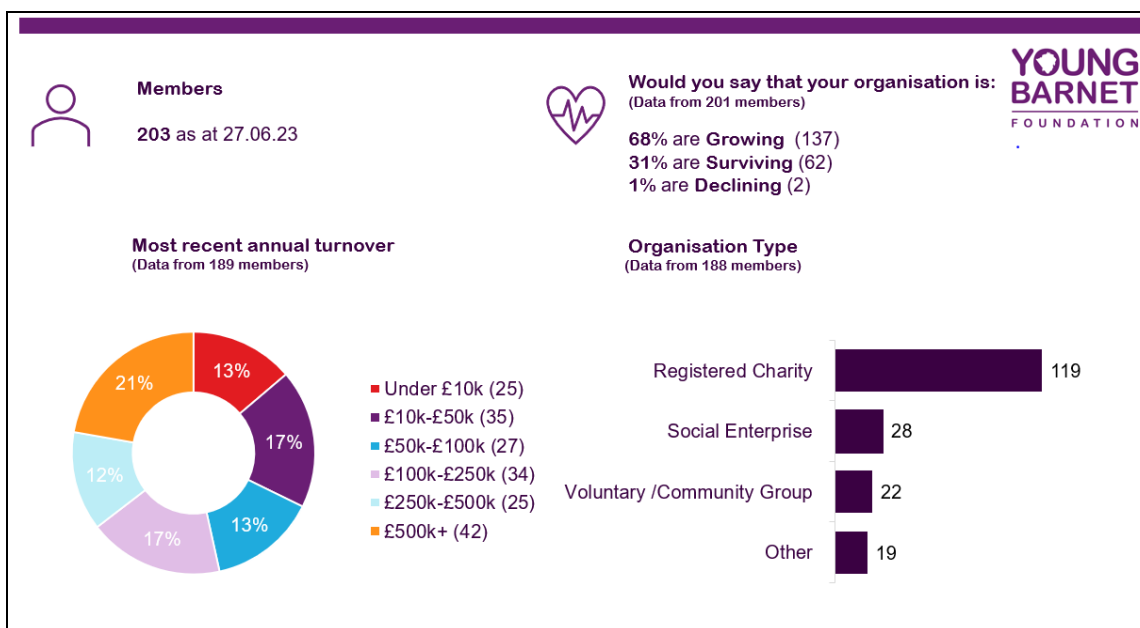
Community Resources - Space

- Groups are hampered by the lack of delivery/storage space. To support the sector, we need to understand fully the availability of and need for community spaces.
 - To this end we will continue to work with the council and partners to broker partnerships in terms of delivery space, continue with our community spaces review to map space and community space need to ensure that we can, where possible, build this into the borough's plans.

4. Background Papers

Please see the accompanying presentation (Appendix A) for a detailed breakdown, duplication of the PowerPoint presentation.

Appendix A: Young Barnet Foundation Membership data Member Overview



(Data from all 203 members)

How many full time employees currently work for your organisation?	How many part time employees currently work for your organisation?	How many volunteers support the work of your organisation?
0: 42% (85)	0: 20% (40)	0: 10% (21)
1-5: 40% (81)	1-5: 46% (94)	1-5: 29% (58)
6-10: 7% (14)	6-10: 13% (27)	6-10: 19% (38)
11-20: 7% (14)	11-20: 8% (16)	11-20: 15% (31)
21+: 4% (9)	21+: 13% (26)	21+: 27% (55)

Do you have any of the following quality marks/badges?
(Data from 73 members)

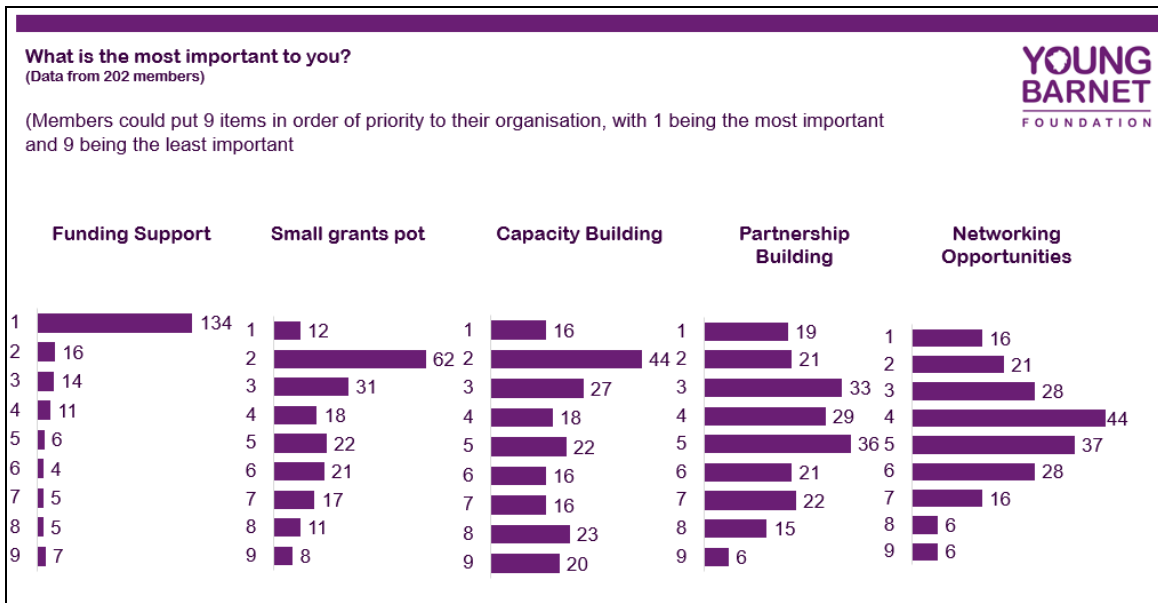
(As more than one quality mark/badge could be selected the figures below represent each option selected by members)

- 29% Other (24)
- 22% London Youth (18)
- 14% National Resource Centre for Supplementary Education (for supplementary schools) (12)
- 11% Arts Award Supporter (9)
- 8% National Council for Voluntary Organisations (7)
- 7% Charity Excellence Framework (6)
- 6% National Governing Body (for sports groups) (5)
- 2% UK Youth (2)

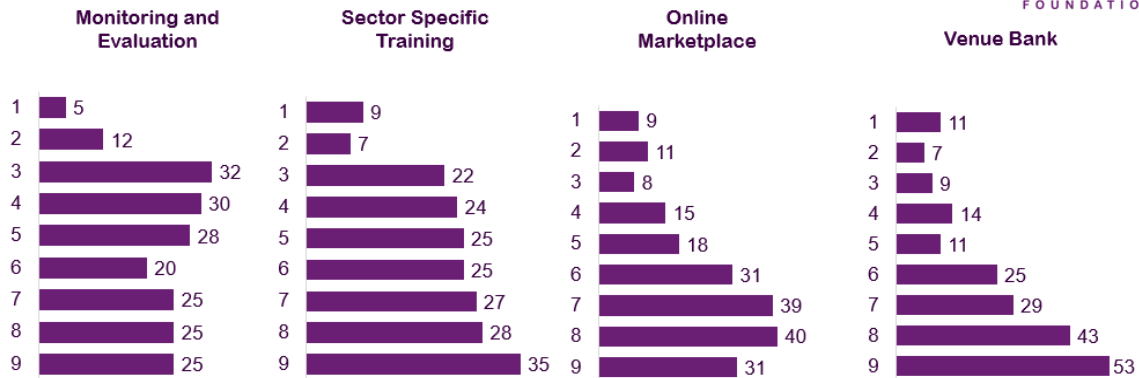
Other? (Please give details)
(Data from 17 members)

- Advice UK
- ASDAN
- Association of Mental Health Providers
- AQA accredited
- AQS
- BASE
- Children and Young People's Mental Health Coalition
- Cyber Essentials Plus
- Disabled Children Partnership
- Disability Confident Employer
- FA Accreditation
- Family Arts Standard
- Fantastic For Families
- Investors in People
- Investing in Volunteering
- Living Wage
- Matrix Standard
- OISC
- Refugee Council
- Sandford Award
- UK Registered Learning Provider

Member Priorities



What is the most important to you? (continued)



What are your aspirations for the next 12 months?

(Data from 183 members)

(As more than one aspiration could be selected the figures below represent each option selected by members)

- 21% Secure sustainable funding (117)
- 20% Increase our services (113)
- 15% Increase volunteer recruitment (83)
- 13% Increase staff (74)
- 9% Deliver in Barnet's schools (52)
- 6% Review our policies and governance (34)
- 6% Sustain our services at the current level (33)
- 5% Secure premises (31)
- 3% Move premises (17)
- 2% Other (give details) (11)
- 0% Decrease our services (1)

Other? (Please give details)

(Data from 10 members)

(Some examples listed below)

- Build an outdoor gym
- Find more ways to spread the word about our free online resources
- Partner up with a local charity and expand the number of member events
- Redevelop building
- Secure new venues to host events
- Support youth providers locally to sustain/expand services

Member Delivery



Are you currently actively delivering in Barnet?

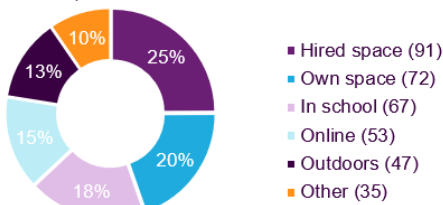
(Data from all 202 members)

- 61% deliver in Barnet and other areas (123)
- 31% deliver only in Barnet (64)
- 3% do not deliver in Barnet but have previously (6)
- 5% do not deliver in Barnet but are aspiring to (10)

Where do you deliver your activities?

(Data from all 203 members)

(Members could select more than one delivery location)



When do you deliver your activities and/ or services?

(Data from all 203 members)

(Members could select more than one delivery time)

- 30% deliver after school - term time (152)
- 26% deliver in school holidays (134)
- 22% delivery at weekends (113)
- 22% deliver in school time - curriculum support (112)



We currently deliver in partnership with:

(Data from all 203 members)

(Members could select more than one delivery partner)

- 32% None of these (84)
- 27% Barnet Schools (71)
- 23% Other local VCFSEs (60)
- 19% Barnet Council (49)



Which schools do you deliver in?
(Data from 59 members)

(Some examples listed below)

- Child's Hill Primary School
- Barnet and Southgate College
- Bell Lane Primary School
- Bishop Douglas School
- Dollis Primary School
- Etz Chaim Primary School
- Finchley Catholic High School
- Hendon School
- Mill Hill County High School
- Saracens High School
- The Orion Primary School
- Woodhouse College
- Wren Academy Finchley

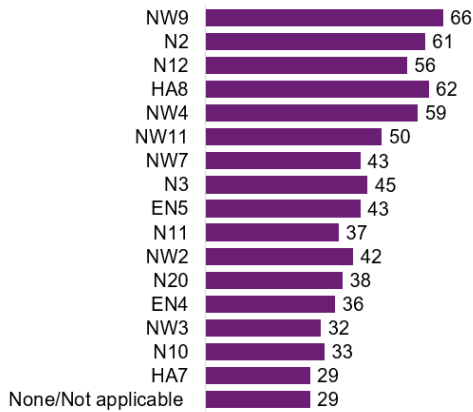
If you selected 'Other' please tell where else you deliver activities?
(Data from 32 members)

(Some examples listed below)

- Broadwalk meeting room
- Community spaces
- Church halls
- Local woodlands
- Mobile media bus
- Online
- Youth clubs

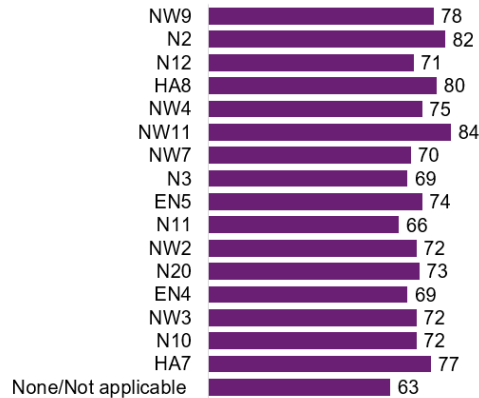
In what Barnet areas are you currently delivering activity?
(Data from all 203 members)

(Members could select more than one)



In what Barnet areas could you deliver activity? (this is areas where you're not delivering at the moment, but where you have capacity to in the future)
(Data from all 203 members)

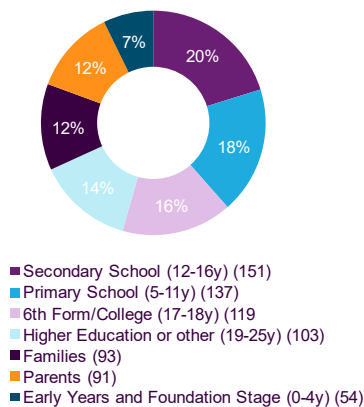
(Members could select more than one)



Participants

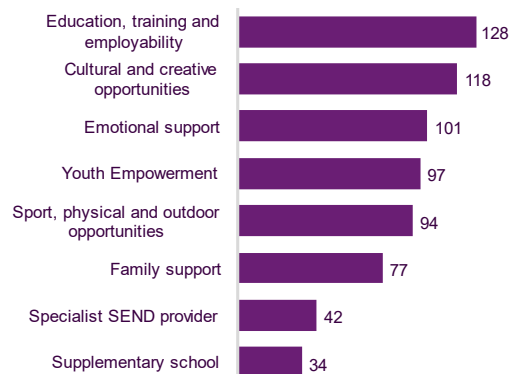
Which age groups do you currently work with?
(Data from 202 members)

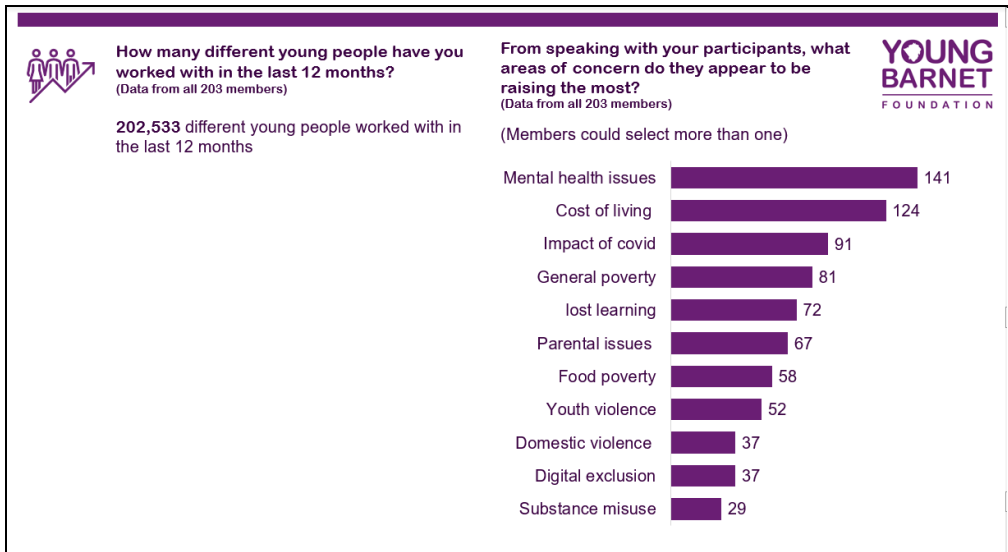
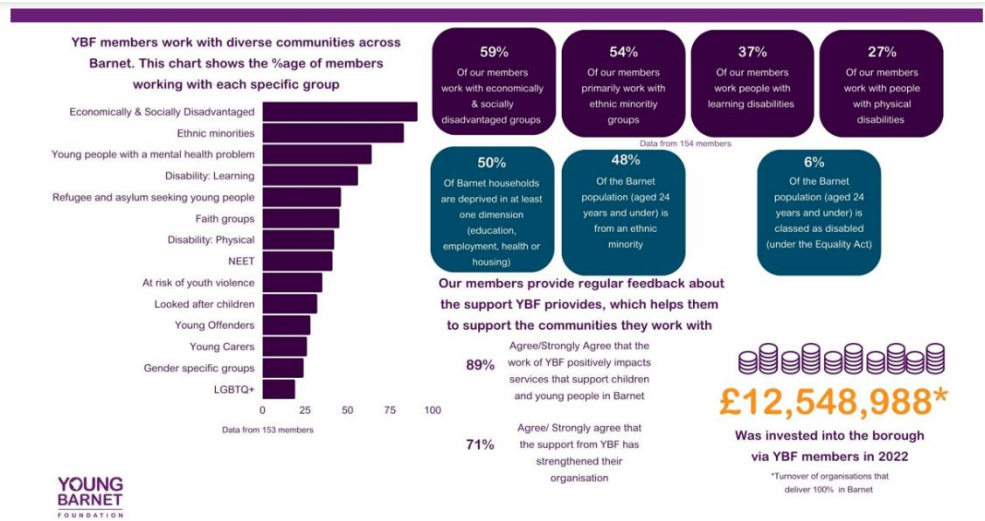
(Members could select more than one)



Which of these services do you provide to the people you support? (please select all that apply)
(Data from 202 members)

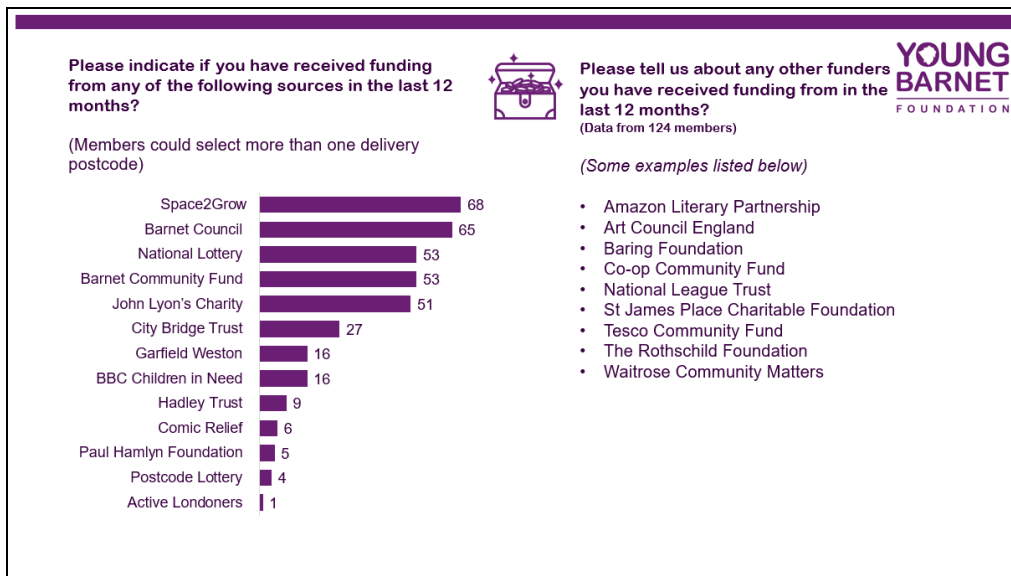
(Members could select more than one)



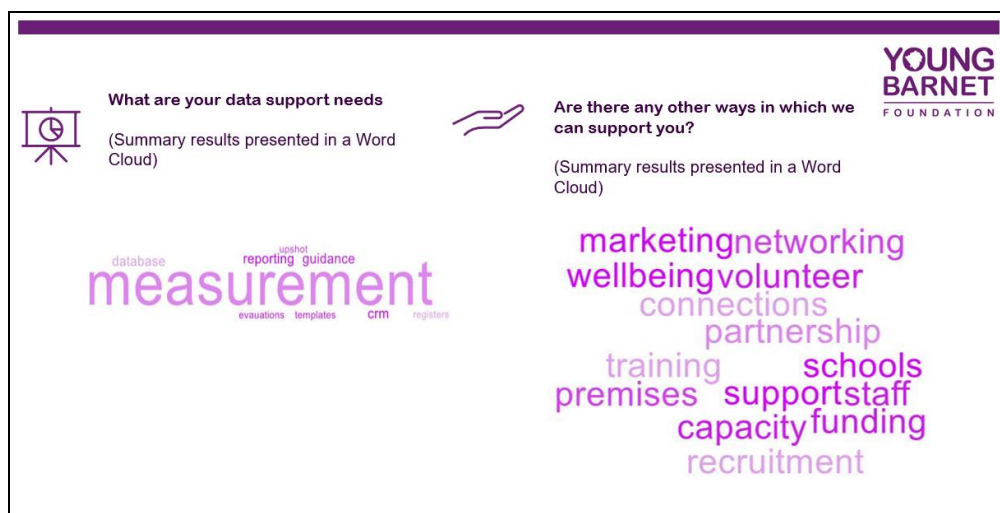


Funding

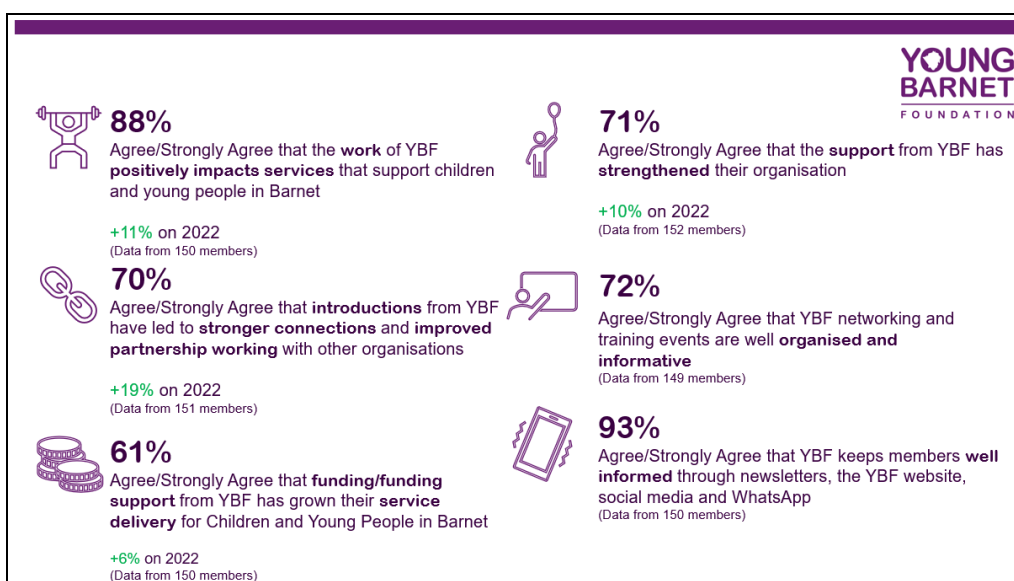




Support Needs



Member Satisfaction Survey Results (for YBF)



Comments

It has been great working with you so far. Excited for the year ahead.

YBF is incredibly well organised and supportive. I cannot thank you enough for the connections you have given us and all of the support. We love being members as it helps us to have support as founders.

We are glad to be part of Young Barnet Foundation

One recent introduction has led to a probably new project from September 2023, new to the borough and not just us. Staff are amazing - supportive, knowledgeable and passionate

We know that you have the sector's back and this counts. You bring us together when it matters most and everyone I have met who works at YBF is deeply committed to strengthening the voluntary sector. Thank you

Overview of Activities

Supporting the Sector – 2022 – YBF Delivery

